

Excetera® Fire & Gas Detection Modular Controller



Excetera® is a dual microprocessor multitasking controller (available Light and Plus versions) designed to satisfy any monitoring task and meet all required safety standards.

Thanks to the modular design **Excetera®** can be inexpensively used into every type of application. From large-scale site monitoring systems in industrial complex applications to measurement and control tasks in small and medium-sized plants.

Addressable back-lit graphic touchscreen display with plain-text readout

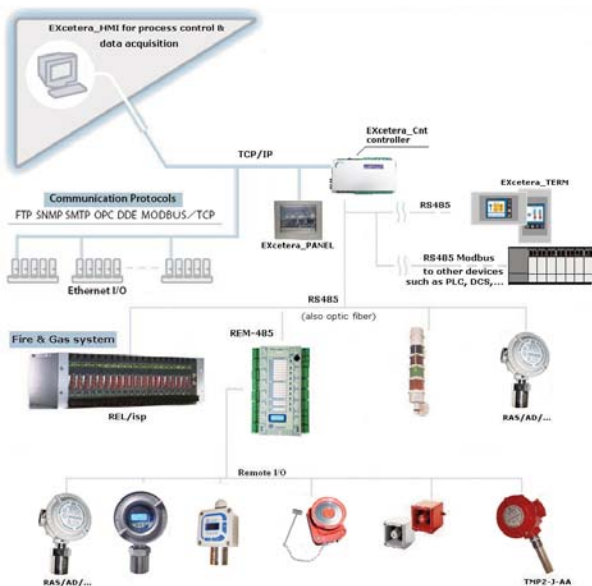
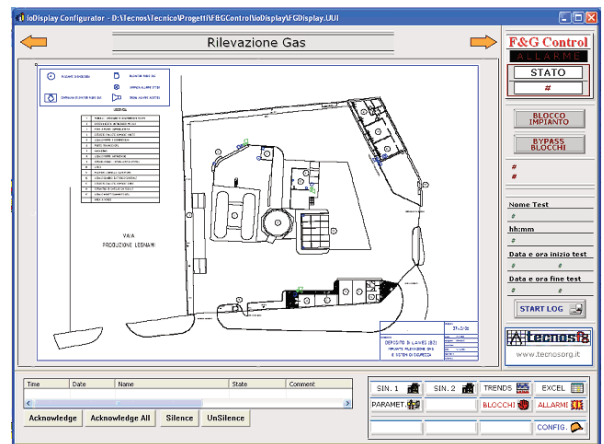


Excetera_CFG

Start-up & Configuration software package

Excetera_HMI

High level operator interface, graphical pages, Alarms log, Real Time & Historical Trends.



Digital bus technology with standard protocol, ModBUS RTU ensures absolute reliability and allow Stand-alone monitoring configurations or communication with remote DCS, BMS or PC.

Redundant data processing:

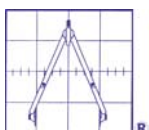
FAIL SAFE structure

SIL 1 capability [non-redundant] and SIL 2 – 3 capability. Compliant to EN 61508 standard

In compliance with the following Standards required for gas warning systems:

[EN 50104, EN 50271, EN 61508, EN 61779-1, EN 61779-4, EN 61779-5, EN 50545-1]

Copyright Oggioni s.a.s.



OGGIONI s.a.s. Via Lavoratori Autobianchi, 1 - P.T.B. Edif.13/O - 20832 Desio (MB) Italy
Tel.+39 0362 629135 Fax. +39 0362 622531 e-mail: info@oggionisas.com www.oggionisas.com

Remote I/O

REM-485 /T3

- 8 Analogue input 4-20 mA or 0-5 V (optional)
- 2 Digital inputs
- 6 Free contacts relay output
- 1 Analogue 4-20 mA output
- Built-in 30W Power Supply
- Battery charger circuit for emergency power operation
- 2 RS-485 drivers
- 2 Optical Cable Drivers 62.5/125 um 3.5 db/Km.



REM-485/T5 Redundancy Module

- 8 Open Collector monitored output (Sink or Source) for redundant T or H configurations outputs [24 V, 0.3 A] allow direct control of relays or other circuit elements.

- Two RS-485 drivers
- Two Optical Cable Drivers 62.5/125 um 3.5 db/Km.

SC-12

- Relay output card
- 12 SPST In System Programmable Relays card
- 3A 110 Vac



SC-8

- Relay output card
- 8 SPDT Relays card for redundant T or H configurations.
- 3A 110 Vac



- RS-485 Modbus Addressable Audible and Visible Alarms repeater**



Interface Card is the easiest solution to exchange data between RS-232, RS-485 or Optical cable network. Hardware WD system checks the status of the optical path and a buzzer alerts in case of invalid module status.

Optobox



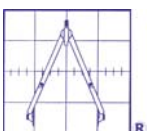
LCD Operator Terminals

LCD 185

- High Performance Touch Screen Terminals
- 320x240 16 colour TFT



- EXcetera_Panel for High level HMI solutions**
- DISPLAY STATION with Touch Screen shallow profiles 12" TFT Flat panel display
- PCI/ISA or PC 104 expansion slot
- 3 Serial port RS-232/485
- Ethernet port



RAS/AD and RAS/DY Gas Transmitters



Microprocessor based Gas Transmitters designed to measure Toxic or Flammable gas concentrations with different range %LEL, %Vol., ppm, TLV, TWA.
RS-485 RTU Modbus serial Interface.
IP65 Aluminium alloy or Stainless Steel version
ATEX II 2G Ex d IIC T6 Certified



DUST/AD and DUST/DY Gas Transmitters



Microprocessor based Gas Transmitters for industrial applications designed to measure Toxic or Flammable gas concentrations with different range %LEL, %Vol., ppm, TLV, TWA.
RS-485 RTU Modbus serial Interface.
IP65 Alluminium or Stainless Steel version.
II 3G Ex nA II T6 compliant.



INTELLIGENT HEAT & FLAME DETECTORS

TMP2 series: Electronic fire and overheat detectors.

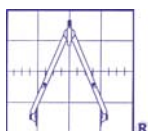
High reliability, dependable long-life.
Immune from EMI disturbances and virtually eliminates false alarms.
Different output configurations.
Static set points and Rate of Rise feature
Self-diagnosis procedure.
Wide range of temperature settings. (-20°C to 120°C)
Two wire technology.

ATEX Ex d IIC T6 and EN54-5 CPR Certified



UV and UV/IR Flame Detectors

Double technology using a microprocessor to analyze and compare the signals of the two specific frequency spectrums.
Realy output, 4-20mA analogue output and sinking, suitable for conventional fire prevention central units.
Monitor High Hydrocarbon and Hydrogen flames
IP65 - EN54-10 CPD certified - ATEX zone 2/22 suitable



Excetera[®]

Fire & Gas Detection Modular Controller



Excetera Technical Features

Controller

EXcetera-L (Light)

Double Processor Controller
Main Processor: 32bit ARM CORTEX-M3 512MB Flash, 96KB RAM
Supervision Processor: Dual Core 64bit ARM-CORTEX-A9 1GB Ram 8GB Flash

EXcetera-P (Plus)

Redundancy:

Triple Processor Controller
Based on LINUX operating system
2 x Main Processors: 32-bit ARM CORTEX-M3 512MB Flash, 96KB RAM
1 x Supervision processor: Dual Core 64bit ARM-CORTEX-A9 1GB Ram 8GB Flash

Display

Local LCD TFT Backlit Display 7" touch for diagnostic and maintenance operations.

Communications (EXcetera-Light and Plus)

Host communication

Ethernet

Serial Port

4 x RS-485 ports for direct connection to serial devices
1 x RS-485 port dedicated to the connection to external control systems (i.e.: BMS, DCS etc...)

Optical Fiber Driver Loop

(EXcetera-Plus only): Wavelength 800 nm, max.distance up to 2,7Km, STconnection with 0,2dB typical, 50/125µm - 62,5/125µm, 100/140µm and 200µm HCS.

MODBUS

RTU Modbus RS-485

Wifi

Included

Serial I/O

Modbus Devices

Up to 250 Devices
For a maximum of 2000 Analog Inputs and 1500 Digital Outputs

Ethernet Devices

Unlimited

Local I/O

8 Analog Inputs

4-20 mA or 0-5 Vdc

4 Opto Isolated Digital Inputs

0-5 / 0-30 Vdc

8 Free Contact Relay Outputs

SPDT 5A at 110 Vac

Power Supply

Built-in Battery backup circuit

16 Vac o 12 - 24 Vdc

7.2 A/h max.

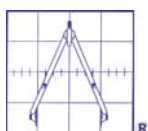
Copyright Oggioni s.a.s.

DISTRIBUITO DA:

Tecnos s.r.l.

Via Lavoratori Autobianchi, 1
Polo Tecnologico Brianza - Edif.13/O
20832 Desio (MB)
Tel. 0362 629135 Fax. 0362 622531
e-mail: info@tecnosorg.it
www.tecnosorg.it

Copyright Oggioni s.a.s.



OGGIONI s.a.s. Via Lavoratori Autobianchi, 1 - P.T.B. Edif.13/O - 20832 Desio (MB) Italy
Tel.+39 0362 629135 Fax. +39 0362 622531 e-mail: info@oggionisas.com - www.oggionisas.com