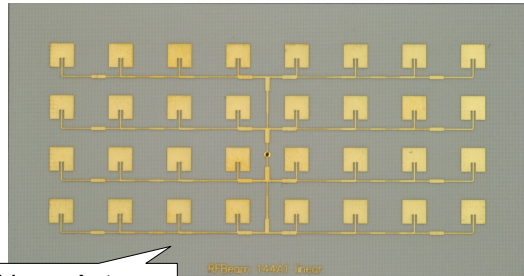
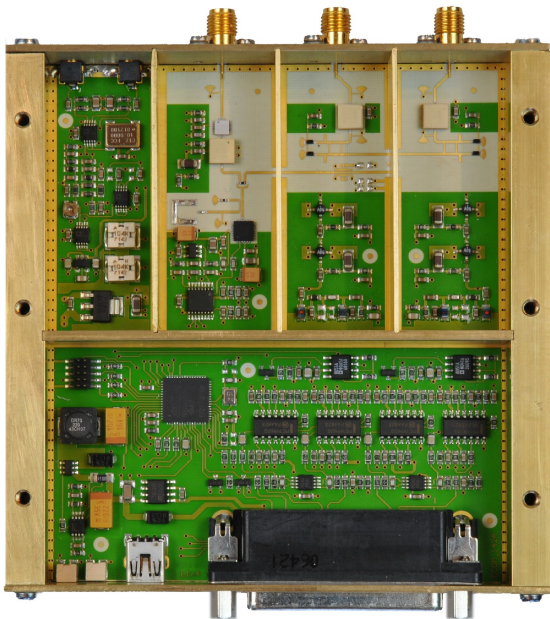


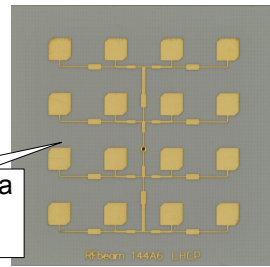
# K-HC2 DUAL RECEIVER SUPERHET RADAR PROJECT

## Highlights

- High Sensitivity (@6dB S/N) : -136dBm / -156Bc (BW = 10kHz, Antenna 17dBi)
- Low Phase Noise: -95 dBc (BW = 100kHz)
- High Frequency Stability: 1ppm/°C
- Digital PLL Tuning Steps: 1MHz
- Amplitude Output Dynamic Range: > 60dB
- IF Output Frequency Range: DC ... 100MHz
- Doppler I and Q Outputs: 10Hz ... 20kHz
- Available Antennas: Linear and circular 4x4 and 4x8 patches and others



Linear Antenna  
Example  
actual size



Circular Antenna  
Example  
actual size

