



Portable instruments

HVAC & Industry



Pressure / Temperature / Humidity / Air velocity & Airflow / Air quality / Solar / Sound level



European Manufacturer
www.kimo.fr

NEW RANGE

Portable instruments HVAC

Temperature / Humidity / Pressure / Air velocity
Airflow / Air quality / Gas detection
Light / Tachometry

 www.kimo.fr/portables



Class 50

- 1 line display
- Integrated probes
- Supplied with adjusting certificate and soft case



Class 110

- 2 lines backlit display
- Remote probes
- Adjustable automatic shut-off
- Supplied with calibration certificate and soft case with handle



Summary

Multi-function	06	Air velocity	12	Accessories	19
Data processing software	08	Humidity / CO / CO ₂	14	Infrared temperature	20
Airflow	09	Temperature	16	Gas detection	21
Pressure	10	Temperature probes	18	Tachometry	21

IP54 ABS housing
Integrated protection

Wireless
Probes



Class 210

- Black & white graphical display
- Wired and wireless remote probes
- Interchangeable modules
- Lithium-ion battery
- Adjustable automatic shut-off
- Optional data processing software
- Supplied with calibration certificate and soft case with handle

AMI 310

- Measure all parameters
- Colour display
- Wired and wireless remote probes
- Interchangeable modules
- Lithium-ion battery
- User expandable memory
- Adjustable automatic shut-off
- Optional data processing software
- Supplied with calibration certificate and ABS transport case



Interchangeable
Probes & Modules

Data processing
Software (option)

Illuminance	22
Solar power	23
Sound level	24
Sound exposure	25

Metrology	26
Services & maintenance	27



New features

Multi-function portables 210/310



Designed for the field

New portable, multi-function instruments are designed for ease of use in the field. An overmoulding made of elastomere protects the instrument, guarantees shockproofing and is comfortable to hold.

The internal memory of 1,000 datasets of 20,000 measuring points allows you to record all your measurements.



Elastomere
Overmoulding

Ease of use

With a large, graphic, color display (AMI 310) or black and white display (Class 210), the new multi-function portable instruments are user-friendly:

- 10-key keypad
- graphic and intuitive interface
- built-in magnet system
- built-in probe holder.



Graphical
Wide screen



New features

Multi-function portables 210/310

Nonstop measurements

This new generation of instruments has an interchangeable and rechargeable Li-ion battery. Class 210 models have 48h battery life, and AMI 310 has 16h battery life.



Large
Autonomy

Scalable instruments

With the different measuring modules (coming in option), the instruments can meet your technical requirements.

Modules: pressure, 4-thermocouple channels, climatic conditions, U coefficient.



Interchangeable
Probes & Modules

Interchangeable probes

The new probes utilise a mini-Din connecting cable which is compatible with all probes. KIMO has designed a new series of interchangeable probes including rotating vane and telescopic hotwire.



Multifunction
Button



Multi-function

AMI 310

NEW



AMI 310 is a multi-probe instrument which can measure up to 6 parameters simultaneously.



Wireless Probes



Data processing Software



Interchangeable Probes & Modules



Micro-SD Card



Graphical Display



Color Wide screen

Measuring ranges

- ± 500 Pa / $\pm 2,500$ Pa / $\pm 10,000$ Pa
- ± 500 mbar / $\pm 2,000$ mbar
- Thermocouple: -200 to $+1760^\circ\text{C}$
- Pt 100: -200 to $+600^\circ\text{C}$
- Humidity: 3 to 98 %RH
- CO: 0 à 500 ppm
- CO₂: 0 à 5,000 ppm
- Air velocity: -5 to 35 m/s
- Airflow: 0 to 99,999 m³/h
- Gas leak detection: 0 to 10,000 ppm
- Tachometry: 30 to 60,000 rpm

www.kimo.fr/ami310



Expandable memory

Internal memory of 1,000 datasets of 20,000 measuring points.

AMI310 has a built-in location for a micro-SD memory card (supplied with the instrument)



Adapt your AMI 310

All our Smart 2014 probes and modules are compatible with AMI310 multi-function instrument.

You can either choose the kits in our product range or customize your own kit with probes and modules according to your needs.



Technical data sheets
www.kimo.fr/ami310

Probes & modules available

Temperature

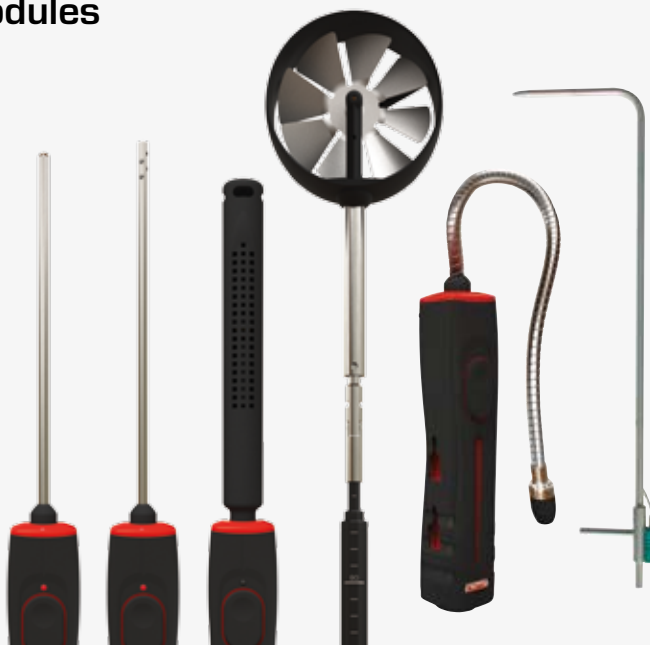
Hygrometry

Vanes & Hotwires

CO / CO₂

Gas detection

Tachometry



Modules

Pressure

4 channels thermocouple

Climatic conditions

U coefficient



Data processing software

Datalogger



Instruments configuration

Configure your operators, clients and sites.



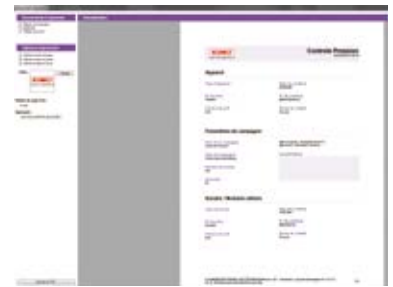
Instruments management

Record your instruments and their calibration certificate.



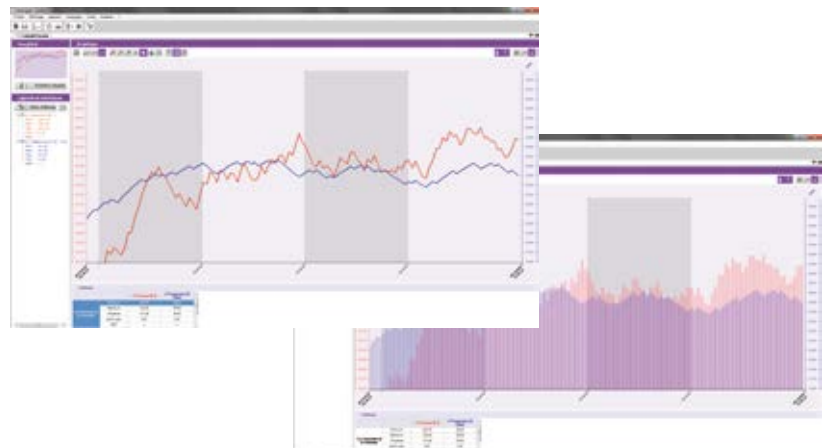
Reports creation

Customise your reports before printing or exporting them as PDF.



Dataset processing

- Customized channels
- Insert comments
- Insert legends and statistics
- Add mathematical functions





Airflow / Pressure / Air velocity

DBM 610 - For airflow commissioning and balancing

Technical specifications

DBM 610 can be used on any supply or exhaust, air distributors: rectilinear, helical and toric.

- Quick and simple hood changes
- Measuring range from 40 to 3,500 m³/h
- Simultaneous display of airflow and temperature
- Automatic airflow direction (extraction or air blast)
- Supplied with 610x610 mm hood
- 4 others hoods are available as options: 720x720 mm, 720x1,320 mm, 420x1,520 mm, 1,020x1,020 mm



Interchangeable Hoods



Micromanometer Function



Calculation functions and autonomous micro-manometer

The electronic housing can be disconnected to be used as a micro-manometer.

DBM 610 is a key instrument for your measurements in air systems: connected to a Pitot tube, it allows the measurement of air velocity or flow inside a duct, and connected to 2 silicone tubes, it allows the checking of filter condition in air-handling units.

Remote velocity grid

NEW

Designed for air velocity measurements on any type of large ceiling vent or diffuser.

The grid is similar to the DBM610 grid. It calculates the average air velocity from 24 points to guarantee a reliable measurement. The grid is attached to a telescopic (maximum length is 2,05 m) and articulated pole (0 to 90°). Struts of 3 different lengths allow for correct positioning of the grid on the ceiling surface.

A backpack allows easy carriage of the grid and its accessories (telescopic pole, articulation, 2 x 2,5m of silicone tube, positioning strut and electronic housing).





Pressure

Class 50/110

NEW

MP 50 / 51

- Auto-zero function
- Hold function
- Supplied with silicone tubes
- MP 50: $\pm 1,000$ Pa
- MP 51: $\pm 1,000$ mmH₂O



MP 55

- Atmospheric pressure
- 700 to 1,100 mbar



MP 110 / 111 / 112 / 115

- Auto-zero function
- Hold/Min/Max Functions
- Supplied with silicone tube (MP 110 and 111)
- Supplied with cristal tube (MP 112 and 115)
- Safety connectors (MP 112 and 115)
- MP 110: $\pm 1,000$ Pa
- MP 111: $\pm 1,000$ mmH₂O
- MP 112: $\pm 2,000$ mbar
- MP 115: ± 500 mbar



MP 130

- Gastightness special manometer for gas network
- Supplied with ABS transport case
- ± 500 mbar



**Air velocity function
Pitot tube**

MP 120

- Temperature and atmospheric pressure compensation
- Adjustable K coefficient for different pressure elements
- $\pm 1,000$ Pa
- 0 to 40 m/s



Pressure / Air velocity / Airflow

MP 210



Measuring ranges

- ± 500 Pa / $\pm 2,500$ Pa / $\pm 10,000$ Pa
- ± 500 mbar / $\pm 2,000$ mbar
- Thermocouple: -200 to $+1,760^\circ\text{C}$
- Pt 100: -200 to $+600^\circ\text{C}$
- CO: 0 to 500 ppm
- Air velocity: -5 to 35 m/s
- Airflow: 0 to 99,999 m³/h
- Gas leak detection: 0 to 10,000 ppm
- Tachometry: 30 to 60,000 rpm



Wireless
Probes



Interchangeable
Probes & Modules



Data processing
Software

Probes & modules available

Vanes & Hotwires

Temperature

CO

Gas detection

Tachometry



Modules

4 channels thermocouple
Pressure



Air velocity / Airflow

Class 50/110

NEW



VT 50

- Hotwire probe
- Hold function
- 0.15 to 30 m/s
- 0 to +50°C



LV 50

- Integrated Ø100 mm vane probe
- Hold function
- 0.3 to 35 m/s
- 0 to +50°C



LV 110 / 111 / 117

- Ø14 mm, Ø70 mm, Ø100 mm vane probes
- Hold/Min/Max functions
- Airflow and Airflow with cones
- Self-acting average
- Detection of flow direction (Ø70 mm and Ø100 mm vanes)
- 0.3 to 35 m/s
- 0 to +50°C



Technical data sheets
www.kimo.fr/portables



Wide range of measuring cones for vane and hotwire probes.



LV 130

- Integrated Ø100 mm vane probe
- Hold/Min/Max functions
- Airflow and Airflow with cones
- Self-acting average
- Detection of flow direction
- 0.3 to 35 m/s
- 0 to +50°C

VT 110 / 115

- Hotwire and telescopic hotwire
- Hold/Min/Max functions
- Airflow and Airflow with cones
- Self-acting average
- 0.15 to 30 m/s
- 0 to +50°C



Air velocity / Airflow / Humidity

VT 210



Measuring ranges

- Air velocity: -5 to 35 m/s
- Airflow: 0 to 99,999 m³/h
- Humidity: 3 to 98 %RH
- Dew point: -50 to +80°C_{td}
- Thermocouple: -200 to +1,760°C
- Pt 100: -200 to +600°C
- Atmospheric pressure: 800 to 1,100 hPa
- Tachometry: 30 to 60,000 tr/min



Wireless
Probes



Interchangeable
Probes & Modules



Data processing
Software

Probes & modules available

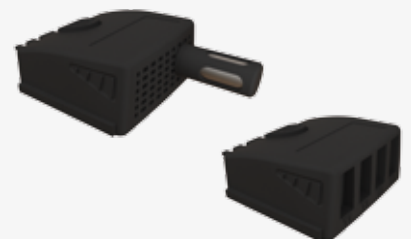
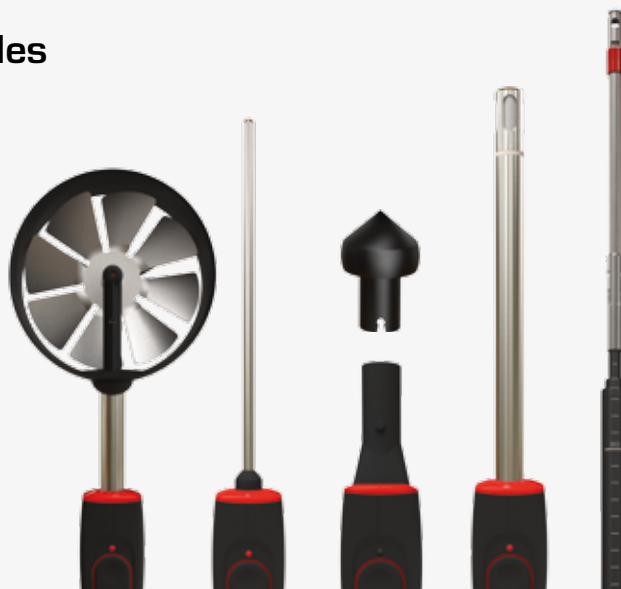
Vanes & Hotwires

Temperature

Hygrometry

Multifunction

Tachometry



Modules

4 channels thermocouple
Climatic conditions



Humidity

Class 50/110

NEW

HD 50

- Thermo-hygrometer
- Hold function
- 5 to 95 %RH
- -20 to +70°C



HM 50

- Pin Moisture meter
- Hold function
- Compatible with 4 types of materials: wood, plaster, brick and concrete
- Supplied with 2 extra pin sets and a protective cap



HD 110

- Thermo-hygrometer
- Hold/Min/Max functions
- 5 to 95 %RH
- -20 to +70°C
- -40 to +70°C dew point



Air quality

Class 50/110

CO 50

- CO-meter
- Hold function
- 0 to 500 ppm
- -20 to +80°C



CO 110

- CO-meter
- Hold/Min/Max and CO max functions
- 0 to 500 ppm
- -20 to +80°C



AQ 110

- CO₂-meter
- Hold/Min/Max functions
- 0 to 5,000 ppm
- -20 to +80°C



Humidity / Air quality

HQ 210



Measuring ranges

- Humidity: 3 to 98 %RH
- Dew point: -50 to +80°C_{td}
- CO₂: 0 to 5,000 ppm
- CO: 0 to 500 ppm
- Air velocity: 0 to 5 m/s
- Thermocouple: -200 to +1,760°C
- Pt 100: -200 to +600°C
- Atmospheric pressure: 800 to 1,100 hPa
- Light: 0 to 150,000 lux



Wireless
Probes



Interchangeable
Probes & Modules



Data processing
Software

Probes & modules available

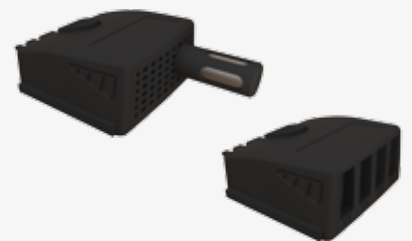
CO / CO₂

Hygrometry

Omnidirectional

Temperature

Light



Modules

4 channels thermocouple
Climatic conditions



Temperature

Class 50/110

NEW

TR 50 / 52

- Pt 100 Thermometers
- 1 or 2 channels
- Hold function
- -100 to +400°C

TK 50 / 52

- Thermocouple Thermometers
- Type K, J, T and S
- 1 or 2 channels
- Hold function
- -200 to +1,760°C



Wide range of probes supplied in option:
ambient, penetration, general, contact, tilted, ...



TR 110 / 112

- Pt 100 Thermometers
- 1 or 2 channels
- Hold/Min/Max functions
- -100 to +400°C

TK 110 / 112

- Thermocouple Thermometers
- Type K, J, T and S
- 1 or 2 channels
- Hold/Min/Max functions
- -200 to +1,760°C



Temperature Pt 100 & thermocouple

TM 210



Measuring ranges

- Measure and display up to 6 channels
- Thermocouple K: -200 to +1,300°C
- Thermocouple J: -100 to +750°C
- Thermocouple T: -200 to +400°C
- Thermocouple S: 0 to +1,760°C
- Pt 100: -200 to +600°C



Wireless
Probes



Interchangeable
Probes & Modules



Data processing
Software

Probes & modules available

Thermocouple K, J, T, S
Pt 100



Modules

4 channels thermocouple
U coefficient



Temperature probes

For HVAC portable instruments



Contact probes

- Contact with lamella
- Copper contact
- Straight lamella
- Angled at 90° lamella
- Magnetic lamella
- On wheels for moving surface
- Wireless probes
- ...

Penetration probes

- Stainless steel sheath with pointer tip
- 150 or 300 mm length
- With or without handle
- IP65 waterproof models
- Needle probes
- T-shape handle
- Wireless probes
- ...



Pipes probes

- Lamella contact and spring for pipes
- Contact with clamp
- Lamella contact with curved tip
- Velcro
- ...



Technical data sheets
www.kimo.fr/portables



Accessories

For HVAC portable instruments



Saturated salt solutions

For hygrometers



Measuring cones

For vanes and hotwires



Magnetic protective housing

For class 50/110



Backpack

For class 210/310



Infrared printer

For class 210/310



ABS transport case

For class 50/110



Debimo blades

For class 210/310



Distance guide rod

For air system vent



Telescopic extension

Tilting at 90°



Infrared temperature

Thermometers

Diagnose, inspect and check any temperature, with the advantage of using "no-contact" technology. You can safely measure surface temperatures of hot, dangerous or difficult to access objects.

Kiray 100

- -50 to +800°C
- Optical D.S: 20:1
- Dual laser sighting
- Emissivity: adjustable from 0.10 to 1.00 (pre-set at 0.95)
- High/low alarm
- Supplied with case



Kiray 200

- -50 to +850°C
- Optical D.S: 30:1
- Single laser sighting
- Emissivity: adjustable from 0.10 to 1.00 (pre-set at 0.95)
- Input for K thermocouple probe
- High/low alarm
- Memory: 20 temperature values
- Supplied with case and K thermocouple probe



Single or dual
Laser sighting



Technical data sheets

www.kimo.fr/kiray

Kiray 300

- -50 to +1,850°C
- Optical D.S: 50:1
- Dual laser sighting
- Emissivity: adjustable from 0.10 to 1.00 (pre-set at 0.95)
- Input for K thermocouple probe
- Memory: 100 temperature values
- High/low alarm
- Supplied with transport case, K thermocouple probe and tripod





Gas detection

Class 110

NEW



DF 110

- Detector of refrigerant gases and hydrogen (HFC, HCFC, Nidron 5...)
- Visual and audible alarm
- Manual and automatic self-calibration



FG 110

- Gas leak detector
- Detection of gas such as methane (CH₄), LPG (isopropanol and isobutane) and others combustible gas (hydrocarbons)
- Hold/Min/Max functions
- Audible alarm
- Supplied with check-report



Technical data sheets
www.kimo.fr/portables



Tachometry

Class 50/110

CT 50 / 110

- Portable tachometers
- Optical and contact
- Hold function (CT 50)
- Hold/Min/Max functions (CT 110)
- Optic: 60 to 60,000 rpm
- Contact: 30 to 20,000 rpm
- 4 to 2,500 m/min
- Supplied with 1 meter of reflective tape





Illuminance

Luxmeters



NEW

LX 50

- Class C luxmeter
- Hold function
- 0 to 10,000 lux
- 0 to 929 fc
- Supplied with adjustment certificate



LX 100

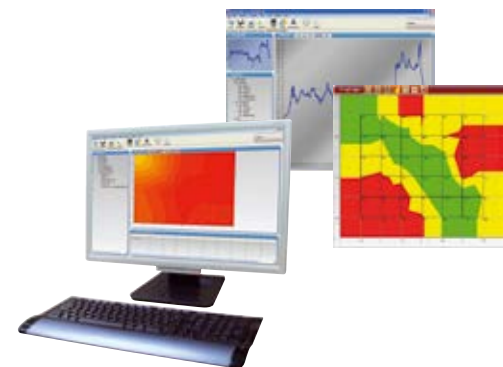
- Class C luxmeter
- Instantaneous measurement
- Timed measurement
- Relative illuminance function
- Hold/Min/Max functions
- 0.1 to 150,000 lux
- 0.01 to 13,940 fc
- Supplied with calibration certificate



Instruments compliant to **NF C 42-710**

LX 200

- Class B luxmeter
- Instantaneous measurement
- Relative illuminance function
- Evolution of illuminance according to weather conditions
- Cartography of illuminance
- Uniformity
- Hold/Min/Max function
- 0.1 to 200,000 lux
- 0.01 to 18,585 fc
- Supplied with LLX 200 software and calibration certificate



As per following standards
NF EN 12464-1 / NF EN 12464-2
NF EN 12193

Operating software for data processing and printing of customizable reports.



Solar power

Solarimeters / Pyranometers

SL 100

- Measurement and spot check of solar power
- Calculation of energetic exposure
- Results saved when instrument is switched off
- Hold/Min/Max functions
- 1 to 1300 W/m²
- 1 Wh/m² to 500 kWh/m²
- Supplied with calibration certificate



IP68 Waterproof Solar cell

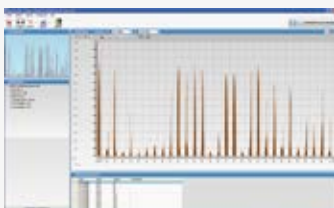
SL 200

- Measurement and spot check of solar irrigation (instantaneous, average, time-recording)
- Calculation of energetic exposure
- Storage and saving of average values of power
- Recorded datas can be read on the display, and the graphic function allows a fast interpretation of the measured file
- Hold/Min/Max functions
- 1 to 1300 W/m²
- 1 Wh/m² to 500 kWh/m²
- Supplied with calibration certificate



Accessories

For solarimeters



LSL 200 (SL 200 only)

Configuration, download and data processing software of stored instrument data



Fixing kit
For solar panels



Tripod
For SL 100
and SL 200



Sound level

Sound level meters



DB 100

- Class 2 sound level meter
- 30 to 130 dB
- Frequency weighting A
- Sound-pressure level LA
- Time averaged sound level LAeq
- Supplied with calibration certificate



DB 200

- Class 2 sound level meter integrating-averaging with storage function
- 30 to 130 dB
- Frequency weighting A, C, Z
- Weighted sound level L
- Equivalent continuous level Leq
- Sound exposure level LE
- Peak pressure level LpK
- Supplied with calibration certificate and LDB 23 software



As per standards
NF EN **61672-1** / NF EN **60651**
NF EN **60804**



DB 300/2 & DB 300/1

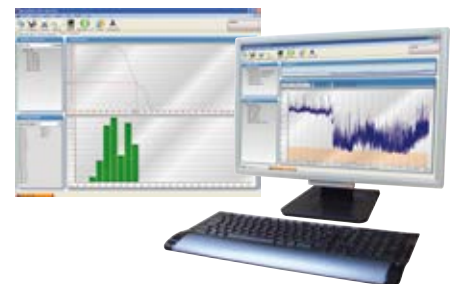
- Class 2 or class 1 sound level meter integrating-averaging with storage function
- Dynamic range: 30 to 137 dB (class 2), 20 to 137 dB (class 1)
- Real time analyser by octave bands: 31,5 Hz to 8 kHz (class 2), 16 Hz to 16 kHz (class 1)
- Audio recordings on treshold
- Frequency weighting A, C, Z
- Weighted sound level LXy
- Equivalent continuous level LXeq
- Sound exposure level LXE
- Peak pressure level LUpK
- Supplied with calibration certificate and LDB 23 software



Noise at
Workstation



NR comfort
Criteria



Data processing software

In option for DB 200 and 300, LDB 300 software is specific for industry and work environment. It allows for elaborated data processing and reports printing as per NF S31-010 standard.



Technical data sheets
www.kimo.fr/sound-level



Sound exposure level

Noise dosimeters

DS 200

- Noise pressure level: LAF, LAS, max, min
- Equivalent continuous level: LAeq, LCEq, max, min
- Peak pressure level: LCpk, LZpk
- Detection and peak counting: 135 dB, 137 dB, 140 dB
- Daily sound exposure level: Lex,d
- Sound exposure: EA,T : in Pa²h
- DOSE
- Supplied with calibration certificate and LDS 23 software



Applicative standards
NF EN ISO **9612 : 2009**
(previously NF S 31-084)



2003/10/CE
Directive

DS 300

- Only one dynamic range extended from 100 dB: 40-140 dB
- Noise pressure level: LAF, LAS, max, min
- Equivalent continuous level: LAeq, LCEq, LXEQ
- Daily sound exposure level: Lex,d
- Detection and peak counting: 135 dB, 137 dB, 140 dB
- Frequency analysis: 63 Hz - 8 kHz
- Audio recording on treshold
- Two-channel measurement
- DOSE
- Supplied with calibration certificate and LDS 23 software



Data processing software

In option for DS 200 and 300, LDS 300 software allows for elaborated data processing, metrological configuration of measurement and custom prints.

Accessories

For sonometers & dosimeters



Microphone
For dosimeters



CTL 100
Automatic check
for DB 100



CAL 200 / 300
Acoustic calibrators
class 1 and class 2



Tripod
For sonometers



Metrology & Laboratories

Verification / Adjustment / Calibration



Metrology

- 100% reliable measurements

Calibration checks the measurements accuracy of the instrument, compared to COFRAC certified standard reference instruments.

Calibration certificates show the details of KIMO standard reference instruments and their connection to National Standards such as COFRAC in France.

KIMO can perform COFRAC calibrations to your specification.

 www.kimo.fr/laboratories



Calibration/Adjustment
of measuring instruments

1,500 m² of laboratories

- Temperature
- Hygrometry
- Air velocity
- Airflow
- Pressure
- Gas analysis
- Acoustic
- Weighting
- Solar power
- Tachometry
- Illuminance
- Electricity



ACCREDITATION
N°2-1885
PORTEE
DISPONIBLE SUR
WWW.COFRAC.FR

Accredited temperature laboratory as per ISO 17025 standard

KIMO can perform COFRAC calibrations on any type of thermometer: measuring chain, PT100, Thermocouple) within a range from -70 to +200°C, in sterilizer or in baths.



ACCREDITATION
N°2-5553
PORTEE
DISPONIBLE SUR
WWW.COFRAC.FR

Accredited hygrometry laboratory as per ISO 17025 standard

KIMO can perform COFRAC calibrations on any type of hygrometer within a range from 5 to 95 %RH for a dry temperature from +10 to +50°C.



Services & Maintenance

Control / Repair



Customer support

On receipt of your instrument, our technicians take care of it in accordance with our quality procedures. A complete check is performed and a quotation is issued.

The instrument is cleaned and repaired. A complete test is done prior to return shipment.



Free inspection
And quotation

 www.kimo.fr/cs



DISCOVER ALL OUR PRODUCT RANGES

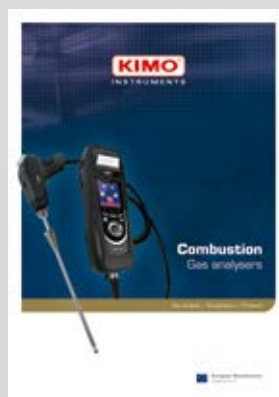
on www.kimo.fr



General catalogue



Sensors transmitters



Flue gas analysers



Dataloggers

RCS (24)Périgueux 349 282 095 - Document non contractuel - Nous nous réservons la possibilité de faire évoluer les caractéristiques de nos produits sans préavis

EXPORT SALES DEPARTMENT

KIMO represented worldwide



Doc Portable Générale - V1 - Anglais - 01/15

www.kimo.fr



KIMO - Export Sales Department
Tel.: +33 1 60 06 69 25 - Fax: +33 1 60 06 69 29
Email: export@kimo.fr

Distributed by:



European Manufacturer
www.kimo.fr