

RV2-24 - RAIN SENSOR

RV2-24 is a rain sensor designed for HVAC and building automation systems to detect precipitation (rain/snow).

The sensor can be used to protect awnings / sun shades and skylights against rain. The sensor has a build-in heating element.

RV2-24 has a change over relay. One terminal for rain status (NO) and one terminal for no-rain status (NC).

The relay will change with a delay at approximately 2 seconds when rain starts. When the rain stops, the relay changes back after the heating element has re-established a dry surface at the sensor.

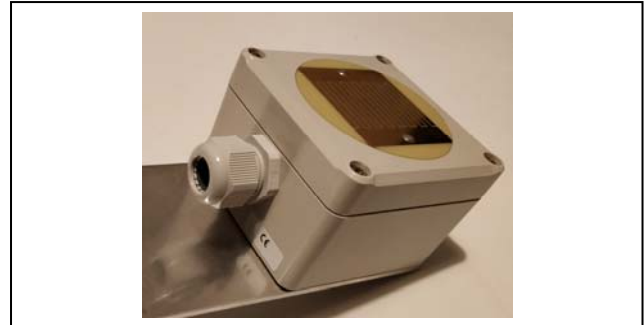
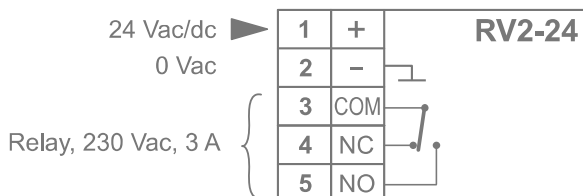
NOTE: The sensor also reacts to snow. If the snow is "dry" and falls in strong wind, then it can't sense correctly.

The sensor can be installed on the wall with screws or at the mast with the clamping bracket included. Mount the sensor to 5° angle.

The surface of the sensor must be cleaned if needed. Depending of the environment it is recommended to clean it once a year.

IMPORTANT: Do not use strong detergents or sharp tools for cleaning.

Wiring



Technical data

| | |
|---------------------------|-------------------------------|
| Supply | 24 Vac/dc (22...26 V), < 2 VA |
| Relay load | Max. 230Vac, 3A |
| Cable gland | M16 |
| Protection class | IP65 |
| Dimensions, incl. bracket | 80 x 82 x 55 mm |
| Weight | 0,65 kg |

Ordering guide:

| Model | Product number | Description |
|--------|----------------|-------------|
| RV2-24 | 1136070 | rain sensor |

Products fulfil the requirements of directive 2004/108/EC and are in accordance with the standards EN61000-6-3 (Emission) and EN61000-6-2 (Immunity).