

LEVEL SWITCH STANDARD UNIT



GSS-F25

Product-ID: 603245

Level Switch Standard Unit

General:

The level switches offer to the user a simple and reliable solution in the liquid level control application. These standard units are available with cable length of 3.0 m. The working principle is based on the movement of the magnetic float which drives the reed switch inside the level-stem. The cable and switch are epoxy sealed inside the stem and the sealing process is produced by a temperature controlled heating system. A rugged and free of maintenance product.

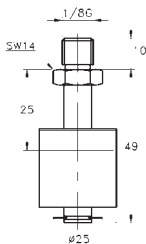
- Constructions up to 180 °C working temperature on request
- Protection class IP65
- Constructions ATEX on request

Specifications:

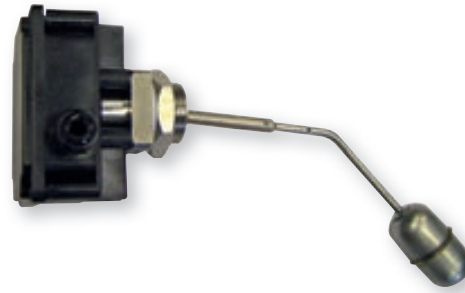
Float:	PVDF
Density:	≥ 0.65 g/cm ³
Stem:	PVDF
Pressure max.:	6 bar
Temperature max.:	130 °C
Contact:	SPST (NO)
Power:	70 VA / 50 W
Voltage:	300 V AC / 300 V DC
Current:	0.5 A AC / 0.7 A DC
Connection:	1/8"
Switching difference:	25 mm
Accuracy switching point:	±3 mm
Cable:	3.0 m

Electric connection:

Working temperature:	-30 ... +55 °C
Relative humidity:	0 ... 90 % RH
Scope of supply:	Device, manual



LEVEL SWITCH



GNS-C1

Product-ID: 606051

Level Switch (with 1 microswitch)

GNS-C2

Product-ID: 606210

Level Switch (with 2 microswitches)

General:

These level switches offer the most reliable solution for liquid level control where side mounting system is required.

- Switch head magnetically actuated
- 1 or 2 microswitches
- Adjustable stem length
- Brass or AISI-316 construction
- good repeatability
- very reliable

Specifications:

Processconnection:	G1"
Density medium:	> 0.7 g/cm ³
Pressure max.:	25 bar
Temperature max.:	180 °C
Working temperature:	-30 ... +55 °C
Relative Humidity:	0 ... 90 % RH
Hysteresis max.:	20 mm
Weight:	440 g
Body materials:	Natural Brass or Stainless steel (AISI-316)
Float material:	Stainless steel (AISI-316)
Microswitch:	1x or 2x SPDT
Voltage:	250 V AC / 48 V DC
Current:	3AAC / 3A DC
Electr. Connection:	via screw terminals
Wiring:	Independent micro switches separately wired SPDT
Protection Class:	IP65 (Housing)

Optionen:

GNS-C1-S

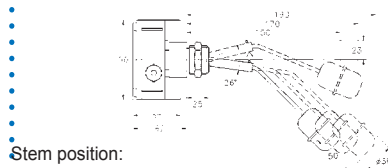
Product-ID: 607988

Level switch with 1 microswitch, body material stainless steel AISI - 316

GNS-C2-S

Product-ID: 605151

Level switch with 2 microswitches, body material stainless steel AISI - 316

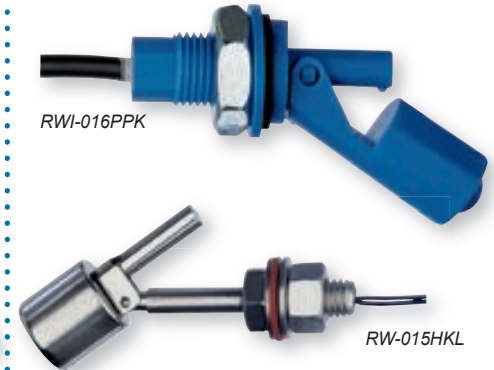


Stem position:

	1 Microswitch		2 Microswitch	
	ON	OFF	ON	OFF
Long	-46 mm	-63 mm	-32 mm	-49 mm
Medium	-48 mm	-61 mm	-34 mm	-47 mm
Short	-50 mm	-60 mm	-36 mm	-46 mm

Switch point tolerance: ±5 mm

FLOAT SWITCH



RWI-016PPK

Product-ID: 602912

Float switch (polypropylene)

RWI-016PVK

Product-ID: 602913

Float switch (PVDF)

RW-015HKL

Product-ID: 606211

Float switch (stainless steel)

General:

Mechanical level controller for liquids. A magnet-equipped float triggers a pre-fixed reed switch.

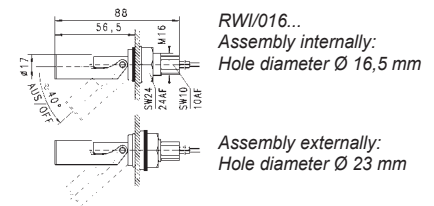
- wall mounting
- reliable and with good repeatability
- stainless steel design for high temperatures

Application:

Sensor suitable for: water, oil

Specifications:

	RWI-016PPK	RWI-016PVK	RW-015HKL
Measuring principle:	reed switch	reed switch	reed switch
Switch type:	n.c. or n.o depending on installation position		
Switching power:	250 V AC, 0.5 A, 50 VA	250 V AC, 0.5 A, 50 VA	220 V AC, 0.28 A, 30 VA
Density medium:	>0.6 g/cm ³	>0.75 g/cm ³	>0.70 g/cm ³
Working temperature:	max. 90 °C	max. 130 °C	max. 200 °C
Working pressure:	PN = 3 bar	PN = 6 bar	PN = 5 bar
Mounting position:	horizontal	horizontal	horizontal
Protection class:	IP 65	IP 65	IP 65
Electrical connection:	~ 50 cm cable	~ 50 cm cable	~ 60 cm cable
Materials:			
Body:	PP	PVDF	stainl. steel 1.4571
Float:	PP	PVDF	stainl. steel 1.4571
Seal:	viton	viton	
Weight:	approx. 75 g	approx. 75 g	approx. 120 g



PRC Technologies Corp., Ltd. ลาดพร้าว 101 กรุงเทพฯ 10240

โทรศัพท์ : 02 530 1714, 02 932 1711 มือถือ : 086 360 8600

อีเมล : contact@prctech.net LINE ID1 : prctech-info, LINE ID2 : @prctec