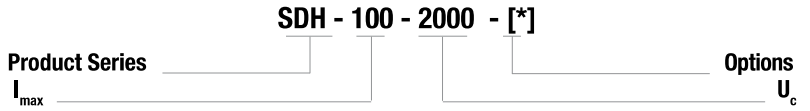
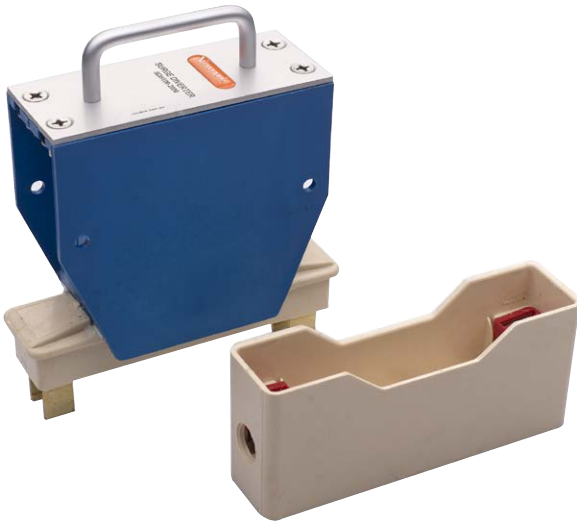


**SDH High Voltage Surge Diverters**

Novaris SDH High Voltage Surge Diverters have been engineered for system voltages above 600VRMS. Typical applications include aviation runway lighting, mining and railway industries.



SDH-100-550

SDH-200-1000

SDH-100-1500

SDH-100-2000

Electrical Specifications					
Connection type		Shunt			
Modes of protection		L-PE			
Phases		1			
Maximum continuous voltage	$U_0$	550V	1000V	1500V	2000V
Maximum discharge current (8/20 $\mu$ s)	$I_{max}$	100kA	200kA	100kA	
Voltage protection level @ 3kA (8/20 $\mu$ s)	$U_p$	1.6kV	2.6kV	3.8kV	4.8kV
Response time	$t_A$	<5ns			

Mechanical Specifications	
Operating temperature / humidity	-40 to +70°C / 5 to 95% non-condensing
Terminal capacity	25mm <sup>2</sup>
Terminal screw torque	2.5Nm
Environmental	IP 20
Mounting	See mounting options below
Enclosure / colour	ABS, ceramic / Blue
Weight	2.0kg

Dimensions	
Width	57mm
Height	214mm
Depth	162mm

**Standards Compliance**

IEC 61643-1 class I
AS/NZS 1768 category C
IEEE C62.41 category C
BS 6651 category C
CP 33 category C

Options [*]	
GEC RSL63H mounting	H
GEC RSL63P mounting	P
GEC RSL63PH mounting	PH